



Denver Scholarship Foundation Annual Report 2013-2014



THE POSSIBLE FULFILLED



*The Denver Scholarship Foundation
inspires and empowers Denver Public
Schools' students to enroll in and graduate
from postsecondary institutions of higher
education, by providing the tools,
knowledge, and financial resources
essential for success.*



CONTENT

Chairman and Executive Director Letter	2
DSF Tried, Tested and True Timeline	4
TRIED - The Promise of the Possible	
Future Centers	6
Sponsor A Future Center	9
TESTED - The Achievement of the Possible	
SEED Scholars	10
Sponsor-A-Scholar	12
College Partnerships	14
TRUE - The Value of the Possible	
A Cycle of Success	16
A Community for the Possible	
DSF Board of Directors	18
DSF Individual and Organization Donors	19
Financial Report 2013-2014	24



DEAR FRIENDS,

Tried, tested and true. That short phrase speaks volumes about our beginning, the continued refinement of our programs, and the positive outcomes we are creating for thousands of students in Denver.

DSF was launched with a simple yet vital directive to make higher education possible for students whose circumstances would otherwise hold them back. Our charge has become known simply as The Possible – a multi-faceted approach that harnesses the promise of our scholarship as incentive for students to challenge themselves to reach for goals beyond high school.

Major gains in both high school graduation and college enrollment rates validate that we are moving in the right direction, yet that is just the tip of the iceberg. We work in close collaboration with an extensive network of community and college partners, with whom we leverage our resources for even greater impact.

THE POSSIBLE - DEREK DASH

Always interested in politics, Derek Dash knew college would be the first step toward a promising career in government. He received the DSF scholarship and additional aid from the University of Colorado Boulder, where he earned his degree in Political Science and launched his career working as an Advance Associate at The White House.

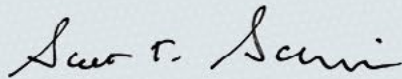
But, we have learned that getting into college is not enough. With the benefit of specialized on-campus assistance programs, developed in collaboration with our partners and offered at colleges and universities statewide, our students are succeeding. Our Scholars are persisting in their certificate and degree programs and preparing to begin their adult lives with the advantages that come with economic sustainability.

Every aspect of our organization is dedicated to an ongoing cycle of improvement. Toward that end we regularly take a hard, critical look at all of our programs as a means to hone our approach. With a blend of imagination, expertise and steadfast determination, we are committed to quality at every turn.

We invite you to review the statistics and see how The Possible is working to help transform dreams into goals, and goals into achievements, improving lives and enhancing the economic future of our community. On behalf of thousands of DSF Scholars and Alumni, thank you.



Nate Easley, Ph.D.
Executive Director



Scott Scheirman
Chairman of the Board
Denver Scholarship Foundation



Nate Easley, Ph.D.



Scott Scheirman



2006

DSF was established with a groundbreaking gift from Denver philanthropists Timothy and Bernadette Márquez along with key support from John Hickenlooper, then the Mayor of Denver. Their vision to eliminate financial barriers and provide a network of support along the college attainment pipeline has created a fundamental shift in the attitudes and expectations of students and families served by Denver Public Schools (DPS).

2007-2008

**134
SCHOLARS**

**DSF SCHOLARSHIPS AWARDED
\$271,129**

DSF initiates programming and services to students in DPS, opening six Future Centers and creating a roaming advisor to serve other high schools.

2008-2009

**722
SCHOLARS**

**DSF SCHOLARSHIPS AWARDED
\$2,844,820**

DSF expands delivery of college access program by opening two new Future Centers, creating an on-campus presence at eight DPS high schools.

2009-2010

**1,285
SCHOLARS**

**DSF SCHOLARSHIPS AWARDED
\$5,349,937**

DSF begins developing formal partnerships with state colleges and universities, leveraging scholarship dollars and providing on-campus student support programming for Scholars.

DSF leads and hosts the National PromiseNet Conference, modeling its college success formula to place-based scholarship providers and communities nationwide.

2010-2011

**1,983
SCHOLARS**

**DSF SCHOLARSHIPS AWARDED
\$9,654,830**

Expanded DSF college access services reaches 17,000 DPS students each year at 16 Future Centers.

2011-2012

2,681
SCHOLARS

DSF SCHOLARSHIPS AWARDED
\$13,349,557

DSF celebrates its first class of college graduates and forms the Alumni Advisory Committee, designed to support DSF Scholar graduates as they transition into the workforce.

2012-2013

3,303
SCHOLARS

DSF SCHOLARSHIPS AWARDED
\$17,131,532

DSF launches the SEED program to help community college students successfully transfer and earn Bachelor's degrees.

Founders Timothy and Bernadette Márquez receive the prestigious National College Access Network's Award of Excellence, honoring the transformational impact of DSF's programs and vision to impact Denver's economic future.

2013-2014

3,979
SCHOLARS

DSF SCHOLARSHIPS AWARDED
\$21,075,187

DSF's college access team operates 16 Future Centers along with a roaming advisor program for other schools, reaching nearly 100% of DPS seniors with college advising services and programming.

DSF has forged robust, strategic partnerships with 33 postsecondary institutions statewide, leveraging financial aid support and delivering an array of on-campus services to ensure student success.

DSF has helped to foster a college-going culture in Denver Public Schools! The on-time graduation rate in DPS has increased to 77%, while the drop-out rate was held below 5%.

DSF Scholars are succeeding in their pursuit of a postsecondary credential! 79% have graduated or are persisting toward their college degree.



Future Centers

OPENING MINDS, OPENING DOORS

For thousands of students in Denver, the road to college starts at a DSF Future Center. An integral part of the schools in which they operate, our professional staff of College Advisors works closely with school counselors, administrators and faculty to inspire greater achievement in high school. The result is a fully integrated network to college access, where students learn that college is possible, and they get the help they need to make it happen. Beginning with resources to identify their college options, students are supported throughout the application process including finding and applying for financial aid beyond the DSF Scholarship.



THE POSSIBLE - CRISTINA CHACON

Cristina Chacon is a proud member of DSF's first class of college graduates. Her path to a successful teaching career began in the Future Center at Abraham Lincoln High School (ALHS). She is now a valued member of the faculty at South High School, where her tri-lingual skills are a particular asset to their internationally diverse student population.

2006

In the spring of her junior year in high school, Cristina learns about the new Denver Scholarship Foundation. The counseling office at ALHS provides information about the DSF Scholarship, and how it can help Cristina formulate a plan to go to college.

In the fall of her senior year, Cristina works closely with her college advisor at the newly opened Future Center at ALHS. She is given professional support to research college options, find and apply for financial aid, and begin the college application process.

2007

During her final semester in high school Cristina completes her college admissions applications, and applies for the DSF Scholarship, as well as scholarships and grants.

Cristina graduates from ALHS in June, and accepts an offer of admission from Regis University. She received the DSF Scholarship, and additional financial aid from DSF college partner, Regis University, as well as other scholarships and grants.

In the fall, Cristina matriculates as a full-time student at Regis University, and begins her course work toward a degree in Education.

2011

Cristina renews the DSF Scholarship for all four years of her college career, earns her Bachelor's degree and immediately begins her first job as a teacher for Denver Public Schools.



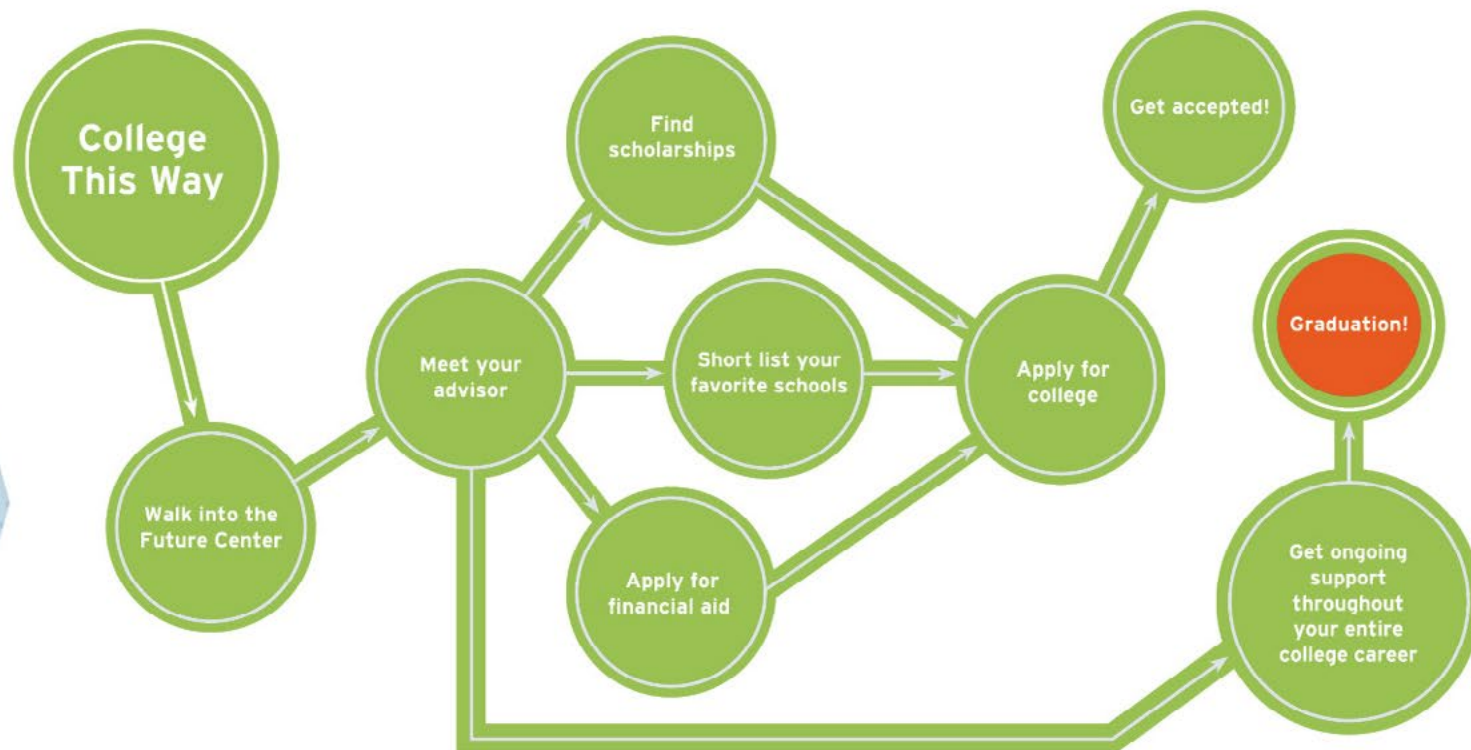
The Denver Scholarship Foundation's work is the answer to prepare our citizens for the jobs of the future.

*Cary Kennedy
Deputy Mayor of Denver*

ABOVE: Deputy Mayor and Chief Financial Officer of Denver, Cary Kennedy, spoke at the 2013 Ed Gala, calling the DSF formula for college success a "game-changer" for Denver's future.

VISIT A FUTURE CENTER

Each year DSF's College Advisors at the Future Centers serve 17,000 DPS students.



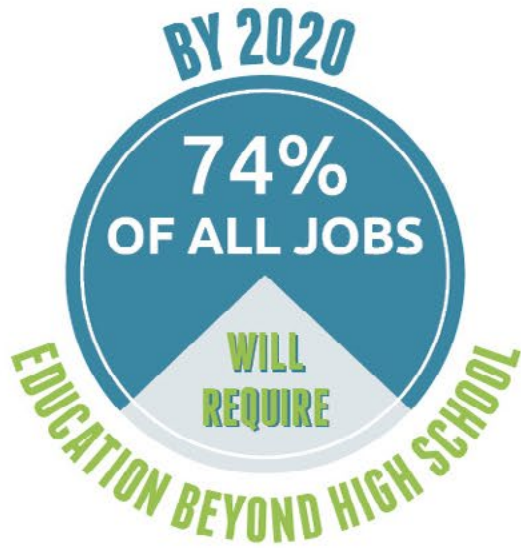
DSF HAS FUTURE CENTERS LOCATED IN 16 DPS HIGH SCHOOLS:

*Abraham Lincoln High School
Bruce Randolph High School
DSST- Green Valley Ranch and
DSST - Stapleton
East High School
George Washington High School*

*John F. Kennedy High School
KIPP Denver Collegiate High School
Manual High School
Martin Luther King Jr. Early College
High School
Montbello Campus*

*North High School
South High School
Southwest Early College
Thomas Jefferson High School
West Campus*

All other DPS high schools are served by an additional DSF advisor who collaborates closely with counselors and other staff to ensure that all DPS seniors have access to our college advice and scholarship.



Chris Chavez joined a team of volunteers from United Launch Alliance to inspire and motivate George Washington High School students to pursue careers in aerospace.

Sponsor-A-Future Center

Our Future Center partners understand that an educated workforce is the foundation of a solid economic future for Denver. And, they realize that the sooner we can engage and inspire the next generation, the better prepared they will be to fill the jobs that will lead our economy through the 21st century.

FUTURE CENTER PARTNERS

Thanks to the following sponsors for investing in our Future Centers.

United Launch Alliance - Future Center Champion

Jay and Rose Phillips Family
 Foundation of Colorado

J.F. Maddox Foundation

JPMorgan Chase Foundation

LARRK Foundation

ULA is proud to partner with the Denver Scholarship Foundation to help grow a workforce that can meet the challenges of the science, math and engineering industries of tomorrow. This is important for all of us in these industries, and ULA wants to support and take an active role in cultivating our future employees and business leaders.

Chris Chavez
 Director, Government Affairs and Communication
 United Launch Alliance



DSF Innovation Expands Opportunities

Sponsored by a generous grant from the Daniel and Janet Mordecai Foundation, DSF's SEED Program addresses an emerging need to empower and support Scholars currently enrolled at Community College of Denver to expand their goals to attain a Bachelor's degree. This innovative, collaborative effort is making a strong impact – 80% of SEED Scholars have completed their extended programs, or are persisting toward a four-year degree.

Our entire city can benefit when community college students are shown how to expand the vision they have for themselves and their future careers. The SEED Program gives the necessary support to help these students make successful transitions toward Bachelor's degrees.

*Janet Mordecai
The Daniel and Janet Mordecai Foundation
SEED Funder*

THE POSSIBLE - SAMANTHA MISCLER

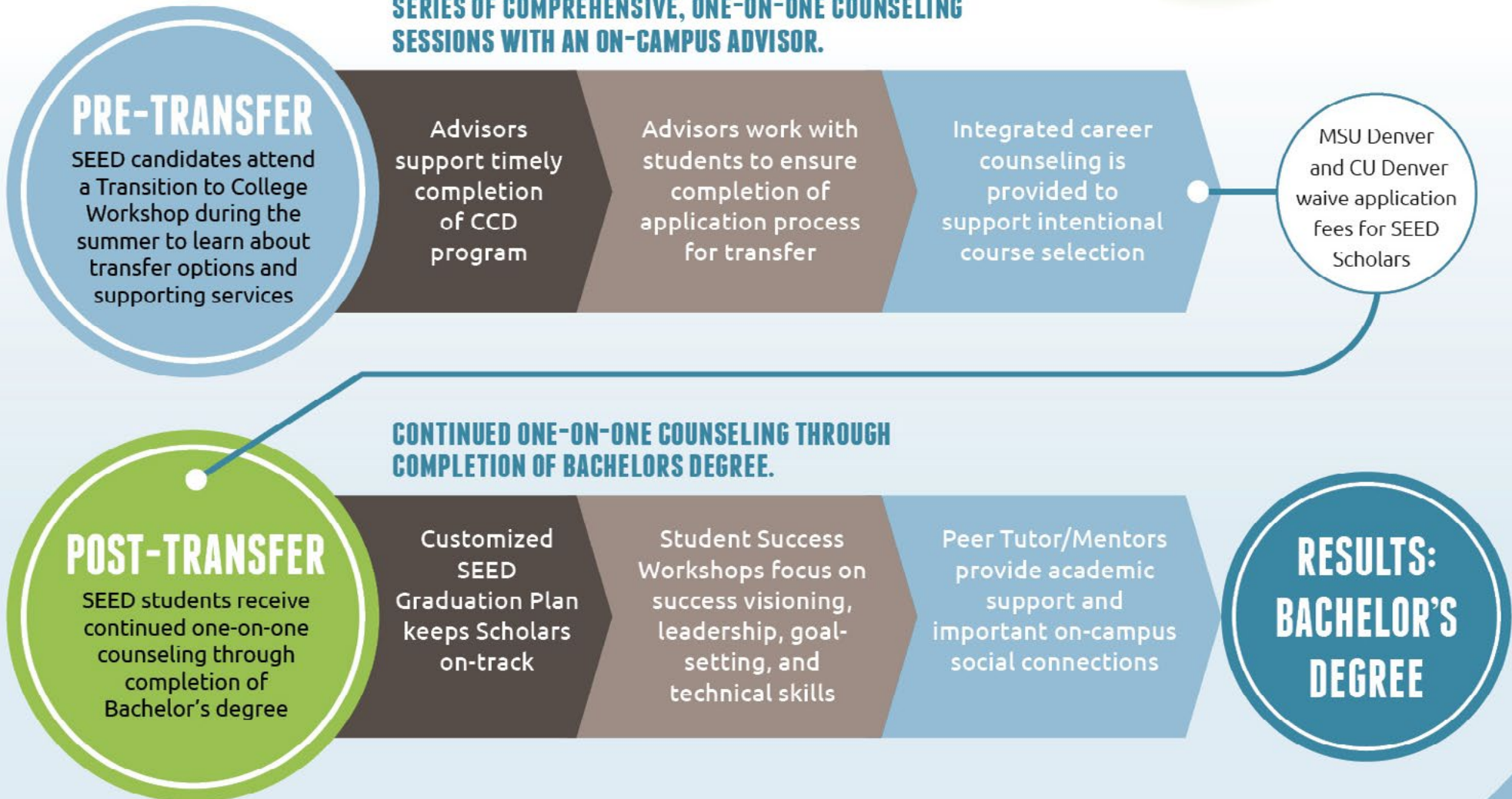
For many DSF Scholars attending community college, the path to continuing their education and earning a Bachelor's degree can be difficult. Such was the case for SEED Scholar, Samantha Miscles. With the additional support made available through the SEED program she was able to expand her goals and successfully transfer to Metropolitan State University of Denver, where she is now well on her way to earning a Bachelor's degree in Human Services. Samantha is looking forward to joining the workforce, fully equipped with the education she'll need to support herself and her family.

BROADENING COLLEGE ACHIEVEMENT

The SEED Program provides a clear and supported path for DSF Scholars enrolled at the Community College of Denver to reach beyond their current goals and extend their education to a four-year degree program at Metropolitan State University, or the University of Colorado Denver.

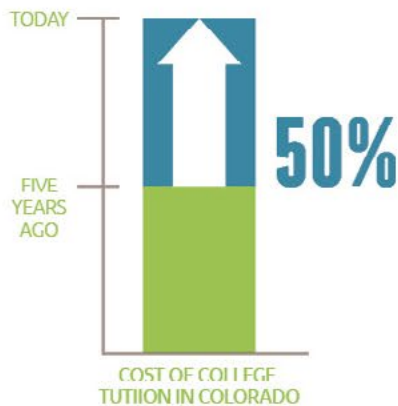


SERIES OF COMPREHENSIVE, ONE-ON-ONE COUNSELING SESSIONS WITH AN ON-CAMPUS ADVISOR.





72% of DPS students qualify for free or reduced lunch.



College tuition in Colorado has increased by 50 percent in just the last five years.

Sponsor-A-Scholar

DSF Scholars come from low to middle-income households, and most are the first in their family to attend college or technical school. Each year, generous donors participating in our Sponsor-A-Scholar program help us illuminate and support a path to education beyond high school for thousands of students in Denver. Investments made in our Scholars not only change their lives and the lives of their families— they make a lasting impact on the long-term economic viability of our entire community. And, with the ability to direct their investment to support a Scholar with particular demographics, our donors have the flexibility to align their gifts with their own philanthropic intent.

SPONSOR-A-SCHOLAR PARTNERS

- | | | |
|--|--|--|
| Kristine Adams | Harvey Family Foundation | Walt and Sue Rakowich |
| Ball Foundation | Allegra "Happy" Haynes | Elisa Ramirez |
| Blue Sky Fund | Debbie Herrera | Roque and Heidi Ramirez |
| Carson Foundation | Sarah Hogan | Rosemary Rodriguez |
| Maria De Cambra | Hutton Parker Foundation | Rose Community Foundation |
| CH2M Hill Foundation | Ireland Stapleton Pryor & Pascoe, PC | Martha and Mike Rubi |
| Connie Burwell White and William W. White Foundation | James and Mabel Cook Scholarship Trust | Rick and Cheryl Schaden |
| Susana Cordova | John and Patricia MacFarlane | Gloria Schoch |
| The Denver Foundation | Genevieve Landricombe | Kathy Seidel |
| The Denver Post Community Foundation | Janet Lopez | William Stanford |
| Kelly Dunkin | Claudia Luna-Asturias | Cori Streetman |
| Nate Easley and Rae Ann Bories-Easley | Loretta Martinez | Thelma and Robert W. Scott Scholarship Trust |
| Enerplus Resources Fund | Monfort Family Foundation | Verizon Foundation |
| Molly and Bryan Ferrer | Emily Oliver | Virginia W. Hill Foundation |
| The Grogan Family Fund | Jamie Patton | Matthew Wallach |
| | QEP Resources | Western Union Foundation |

THE POSSIBLE - REMBERTO RIVERA

With the help of his Future Center advisor at North High School and a DSF Scholarship, Remberto Rivera enrolled at the University of Colorado Denver and graduated with a degree in Accounting. He now works as a Sales Tax Technician at Wagner Equipment Company in Denver.



There were people who believed in us and helped us find our way to college, and we remember how important that was. We wanted to come together and provide that same kind of support to a student from our North High community.

Johanna Leyba

SCHOLAR CIRCLES - CREATE A CIRCLE. BUILD A FUTURE.

DSF Scholar Circles harness the collective strength of individual donors who band together to support a Scholar from a specific high school, or one attending a particular institution from among our 33 college partners. The North High Scholars Circle was formed by a group of the school's alumni who wanted to direct their support to help a student from their community.



Members of the North High Scholars Circle, left to right, Eliseo Tapia, Teresa Kostenbauer, Johanna Leyba, and Miriam Tapia Salinas. Not pictured Dereka Martinez.



Working Together

DSF Future Centers help students enroll in college, and our scholarships reduce the financial barriers. But, that's not the whole story. We have established strategic partnerships with a network of 33 colleges, universities, and technical schools statewide, allowing us to leverage and maximize every dollar we award in scholarships. Just as importantly, these alliances provide integral support that helps our Scholars look beyond college admission and focus on graduation.

The DSF standard of leveraging every scholarship dollar results in additional funding from our college partners that averages 200%, effectively tripling the financial support provided to our Scholars.



2013-14 PARTNER COLLEGES

DSF has special partnerships with these colleges to support student success. Through these partnerships, DSF Scholars have access to dedicated resources on campus to provide academic and social support needed to help them succeed in college.

TECHNICAL COLLEGES

Emily Griffith Technical College

Pickens Technical College

COMMUNITY COLLEGES

AIMS Community College

Lamar Community College

Arapahoe Community College

Northeastern Junior College

Colorado Northwestern Community College

Otero Junior College

Community College of Aurora

Pikes Peak Community College

Community College of Denver

Red Rocks Community College

Front Range Community College

STATE COLLEGES

Adams State University

Western State University of Colorado

Fort Lewis College

STATE UNIVERSITIES

Colorado Mesa University

University of Colorado Boulder

Colorado School of Mines

University of Colorado Colorado Springs

Colorado State University

University of Colorado Denver

Colorado State University-Global

University of Northern Colorado

Colorado State University-Pueblo

Metropolitan State University of Denver

PRIVATE COLLEGES AND UNIVERSITIES

Colorado Christian University

Naropa University

Colorado College

Regis University

Colorado Women's College

University of Denver

Johnson & Wales University



THE POSSIBLE - EBENEZER YEBUAH

Ebenezer Yebuah's own experience in the college process inspired him to work toward a career in higher education. Starting with advice and guidance at the South High School Future Center, Ebenezer received the DSF Scholarship, as well as additional financial support from his chosen college, Colorado State University.

Following completion of his bachelor's degree in human development and family studies, he continued his education and earned a master's degree, also from CSU. Today, Ebenezer holds the position of Hall Director at the University of Colorado Boulder, where he works with international students.

DSF and the CSU system both operate with winning strategies focused on student success. In my long career in higher education, I've learned that winners bet on winners, a principle that makes our partnership a natural fit.

*Chancellor Emeritus Michael Martin
Colorado State University*



CSU Chancellor Emeritus Michael Martin accepts DSF's College Partner of the Year Award from DSF Scholar Alumnus and CSU graduate Ebenezer Yebuah and DSF Executive Director Nate Easley, Ph.D. The university's outstanding support has generated huge success -- 95% of DSF Scholars attending CSU have graduated or are persisting toward their degrees.



A Cycle of Success

The Denver Scholarship Foundation is making a strategic investment in the future economic vitality of our community. Every scholarship dollar is leveraged and positioned to influence additional support from our college partners and community leaders, who share our commitment to higher education. With a comprehensive continuum of support from DSF, our Scholars are persisting toward their degrees, graduating, and entering the workforce as employable, productive and self-sustaining citizens.



DSF has awarded over \$21 million in scholarships to nearly 4,000 students



DSF's college partners have matched our scholarships with an additional \$41 million



Future Center Advisors guided DSF Scholars to an additional \$206 million in scholarships and grants from other sources



\$268 MILLION
TO MAKE COLLEGE POSSIBLE



THE POSSIBLE - AMY AND CARA FALIANO

Twins Amy and Cara Faliano knew their passion for science would lead them to college, but the burden of paying tuition for two students at the same time was a daunting prospect for their family. Receiving the DSF Scholarship was an essential first step for the East High School alumnae, and they successfully earned their degrees in Molecular, Cellular and Developmental Biology from the University of Colorado Boulder. Following a post-graduate program in Medical Laboratory Science, both are now working at University of Colorado Hospital; Amy works in Transfusion Services, and Cara works in the Microbiology Lab.



The combination of improved college access, financial assistance, and on-campus student support has proven to be a highly successful formula.



OUR COMMUNITY

The DSF community of support includes individuals, businesses and foundations who share our passion for educating the next generation, believe in their potential, and

understand that their future success is our future success. On behalf of thousands of DSF Scholars and Alumni, we extend our heartfelt appreciation.

DSF BOARD OF DIRECTORS

Mr. Steven Abelman

Shareholder Brownstein, Hyatt, Farber, Schreck

Mr. Eula Adams

Part Owner, Xcore Computer Corporation

Mr. Joe Blake

Chancellor Emeritus, Colorado State University

Ms. Linda Bowman

President Emeritus, Community College of Aurora

Mr. Barry Dorfman

President, Rocky Mountain Region,
Jones Lang LaSalle Americas, Inc

Ms. Cathey McLain Finlon

Retired; President, Denver Art Museum
Founder McClain Finlon Advertising

Ms. Jayne Ford

Recruiting Director, GHSmart & Company, Inc.

Mr. Mark Goodman

CEO, Boyers Coffee Company

Ms. Wanda Harris

Vice President of Practice Operations,
DaVita Healthcare Partners, Inc.

Mr. Patrick Hatcher

Vice President for Finance, Vistar Corporation

Mr. Andy Holleman

Assistant General Counsel,
Ethics & Compliance, Newmont

Mr. Jack Kim

Founder and Principal, KORE Investments, LLC

Mr. Stephen S. Kurtz

CEO, MuscleSound, LLC

Ms. Susan McIntire

Community Leader and Philanthropist

Mr. R. Scott Nycum, Jr.

Managing Director, J.P. Morgan Chase & Co.

Ms. Lisa Pinto

Director of Communications,
Office of the District Attorney 18th Judicial District

Ms. Margot Pinto

Community Leader and Philanthropist

Mr. Martin Pocs

Vice Chairman/Managing Director, DHR International

Dean Prina, M.D.

Pediatrician, Partners in Pediatrics

Mr. Scott Scheirman

Chairman Executive Vice President and
Chief Financial Officer, The Western Union Company

Mr. Don Silversmith

Chairman, First Western Trust Bank

Mr. Gregory Sissel

Managing Director, Platte River Ventures

Mr. Thomas G. Wattles

Executive Chairman of the Board, DCT Industrial, Inc.

Mr. David West

Vice President, Semiconductor Marketing, Arrow

Mr. Steve White

President, Comcast West Division

Ex-Officio

Nate Easley, Ph.D.

Executive Director, Denver Scholarship Foundation

Superintendent Tom Boasberg

Superintendent, Denver Public Schools

Mr. John Elofson

Secretary Partner, Davis Graham & Stubbs

SENIOR STAFF

Nate Easley, Ph.D.

Executive Director

Wendy Nelson

Deputy Director for
Finance and Administration

Dana Smith

Deputy Director for
Marketing and Communications

Stephanie Spence

Deputy Director for
Development

Rana Tarkenton

Deputy Director for
Programs

DSF Donors 2013-2014

LEGACY DONORS

The Anschutz Foundation

Timothy and Bernadette Márquez

Tom and Noey Congdon

INDIVIDUAL DONORS

Steve and Jeanette Abelman
Kathleen Abels
Marshall and Helene Abrahams
Cindy and John Abramson
Nancy and Tony Accetta
Raydean Acevedo and
Walt Jenkins
Eula and Janet Adams
James and Lorraine Adams
Kristine Adams
Cuneyt Akay
Eric Akerson
Jeff Allen
Inna Altschul
Terry Anderson
Yolanda Anyon
Kristi Arellano
Suzanne Arkle
Joseph Arora
David Aschkinasi and
Merril Stern
Doug Auten
Steve Avis
Marti Awad
Ethan Axelrod
Susan Axelrod
Elizabeth Aybar

Andy Baak and
Jennifer Erickson Baak
Ellen Balaguer and
Mark Chase
Mary Barela-Cordova
Adam and Jill Barkin
Stephen and Lynne Barlow
Greg Barnett
Laura Barton
Marjorie Baumert
Andy and Shelly Beasley
Marianne Bell
Seth and Cody Belzley
Bruce and Marcy Benson
William and Michele Bergner
Barbara Berryman
Mark and Margaret Berzins
Amber and Matt Biviano
Eric and Kendra Black
Maxwell and Debra Blair
Joe Blake
Art and Nancy Blomberg
Thomas Boasberg and
Carin Chow
Rick Boh
Travis Book
Brian and Sarah Boonstra
Jon-Erik and Brooke Borgen

Jacqueline Bove
Brooke Bower
Roger and Linda Bowman
Drayton Boylston
Bob Brady, Jr.
M. Colin Bresee
James and Stephanie Brewer
David Broumpton
DeVita and Mical Bruce
Renaee Bruning
Mike Byrne
Cedric and Kelli Buchanon
Reid Bundgard
Jim Burk
Kari Burman
Lisa Busse
Steve and Janice Cain
Chloe Campbell
Ashley Campsie
Lorena Cantarovici
Dale Cantwell and
Pamela Ray
Donna Cash
William Cassidy
Max and Ramey Caulkins
Scott Chartier
Tom and Rebecca Clark
Thomas and Gini Clayton

Louis and Sue Clinton
Claud Cloete
John and Cress Coffman
Jonathan and
Aimee Coleman
Ted Coleman
Tanja Collins
Timothy and Kirsten Collins
John and Joann Congdon
Jim Conley
Joel and Giovanna Contreras
Robert Coombe and
Julanna Gilbert
Martin Coover
Andrea Cordova
Susana Cordova
William and Lauren Coyne
Tim Crist
Mark and Nancy Crow
Jennifer Culhane
R. Lane Cutter
Donald Daboub and
Gilda Bullon Daboub
Richard Dalton
Lee Dar Lois
Matt Davidson
Nathan and Olivia Davis
Maria De Cambra

Kristin Deal
Stan and Debora Deal
Bill Dehn
Mark DePuy
Todd DeShon
Jerrold DeWitt
Margaret Dickey-Griffith
Donald and Jana Lee Dodge
Stanton and Lindsey Dodge
Lawrence and Patricia Donovan
Barry and Dana Dorfman
Kelly Dunkin
Nate Easley and
Rae Ann Bories-Easley
Mike and Marcy Edwards
Chukwu-umnanya A. Egbune
John and Rita Eichhorn
Trevor and Sandy Elenbaas
John and Renee Eloffson
Mariana Enriquez
Curtis and Rosemary Esquibel
Sammy Esquibel
Eric Eversley
Amy L. Faliano
Cara A. Faliano
Gerald Faliano and
Lisa Faliano
Thomas Feldkamp

Thank You!

INDIVIDUAL DONORS

Natasha Felten
Molly and Bryan Ferrer
Tim Ficker and Mary Fenimore
Chris Figge
David Fleischer and
Veronica Figoli
Cathey and Richard Finlon
Bridget Fitzpatrick
Greg Flaks
David Flitter
Jayne Ford
Cray Fowler
Mike Fox
Erin Franssen
Bernard and Friedman
Doug Fulton
Gretchen Gagel
Amparo Garcia
Ken and Rebecca Gart
Mickey and Nancy Gart
Sally Gart
Greg and Susan Geissler
Matt Gibson and
Gwendolyn Cagle
Mayra A. Gonzalez
Mark and Burgess Goodman
Andrew and Catherine Goodwillie
Stephen and Karen Gottesfeld
Thomas Gougeon and
Donna Middlebrooks
Matthew Goves
Ed and Dianne Green
Bradley and Rachel Greenwald
Tim and Melanie Grein
Greg Gribble
Rachel Griego
Steven and Dana Griffith
Douglas and Gayle Griyys

Neal Groff
Barbara Grogan
R. David Mahon and
Nilsa Guerrero Mahon
Daniel and Becky Gutrich
George and Lisa Hagerman
Patrick and Marissa Hagerty
Ted Hamstra
John Hanley
Timothy and Beth Harlin
Jamie and Leanna S. Harris
Wanda Harris
Hollie Hartman
Patrick and Pamela Hatcher
Chris Haymon
Allegra "Happy" Haynes
Anna Jo Haynes
Justin Heckmaster
Scott and Cheryl Hefner
Debbie Herrera
Andrea Herrera Moreno
Amy Hielt
Samantha Higbee
Henry and Susie Higginbottom
Christopher Higgins DC, PC
Paul Hilgenkamp
Barry and Arlene Hirschfeld
Mike Hodges
Sarah Hogan
Andy and Sharon Holleman
Paul and Mary Holleman
Paul and Judith Holley
Chuck Holum and
Linda Huang, M.D.
Duane and Katherin Howell
Bruce and Heidi Hoyt
Saul Huerta, Jr.
Lucas Ingmire

Walter and Christina Isenberg
Paul Jacobs
Beverly Jaquez
Carmela Jaquez
Gloria Jara
Michael Jennings and LaRae
Scott-Jennings
Mark and Marjorie Johnson
Theron Johnson
Chris Jones
Eric Jones
Greg Jones
Steve and Wendy Kaeuper
Kate Karczewski
Ellen Kastens
Mike Kazarian
Patricia Keegan Abels
Andrew Kelley
Thomas E. Kelley
Timothy Kelley
Aaron Kennedy
Anne Kern
Michael Kern
Jeffrey and Julie Kerrane
Jack and Jeanne Kim
Janice Marie King
Kristy Klare
Donald Klodt
Rebecca Knoblock
William Kohut
Thomas and Mary Korson
Steve and Elizabeth Kris
Steve and Mitzi Kurtz
Erika Laforest
Genevieve Landricombe
Nancy Larson
Steve Leaffer
Bob Lefler

Snowden and Susan Leftwich
Gregory Leibold
Kathryn A. Lester
Ronald and Alysa Levine
Andy Levy
Sharyn Li
Dean and Karen Liley
Doug Linkhart
Jennifer Lipes
Gayle Lipson
John Gaensbauer and
Nancy Lipson
Lester and Nancy Lockspeiser
Janet Lopez
James and Regina Lorenzen
Tracey Lovett
Claudia Luna-Asturias
John and Patricia MacFarlane
Larry Mackenzie
J Madden and Linda Poletti
Joseph Madera
Greg and Sharon Maffei
Joe and Katherine Magner
Michael and Courtney Maguire
Jun Makino
Evan and Evi Makovsky
Betsy Mangone
Tim and Bernie Marquez
Tom and Beverly Marquez
Ellen and Manny Marritt
Andy and Mary Ann Martin
J. Landis and Sharon Martin
Marguerite Martin
Loretta Martinez
Rafael and Rebecca Martinez
Caren Martinez-Gamez
John and Kathy Marvin

Richard Wedgle and
Susan Mason
Caz Matthews
Ashley and Tom May
Marty and Nicole May
Anthony and Delisa Mayer
Will and Christina McConathy
David Baker and
Maureen McDonald
Doug McDonald
Ms. Claire A. McDonough
Kate McGoldrick
Lee and Susan McIntire
Leonard McKinnon
Edward L. McLaughlin
Brad and Melissa McQueen
Chad McWhinney
Andy Mendelsberg
James Mercurio
Tim Mickle
A.J. Miller
Christopher and Kimberly Miller
Skip and Nancy Miller
Keith Miller and
Dana Smith
Aiden and Pam Mitchell
Lisa Mitchell
Trevor Morley
Robert and LeAnn Morrill
Harris Morris
Norma Mozeé
Christopher Muhle
Barbara Mullings
Anna Liisa Mullis
Sherie Munoz
Matt Murphy
Elma Musovic
Angi iLi Na

Prudence Nagel
 Alex and Jennifer Nelson
 Brett Nelson
 Wendy Nelson
 Mike Nerbas
 Jeremy Neubauer
 Glenna Norvelle
 R. Scott and Jody Nycum
 Edward and Kathleen O'Donnell
 Yuji Ogawa
 Emily Oliver

Shaun and Crystal Osthoff
 James Palenchar and
 Liz Lynner
 Leslie Palmieri
 Gary and Joyce Pashel
 David Patterson and Linda Niven
 Jamie Patton
 Federico and Cindy Peña
 M.J. Chavkin and
 Theresa Peña
 Raymond S. Perez

Jordon and Essie Perlmutter
 Andrew and Suzanne Peterson
 Jim and Lisa Piccone
 Ted and Susan Pinkowitz
 Margot and Marc Pinto
 Dan Pippard
 Larry and Jean Pisciotta
 Martin and Christy Pocs
 Jared Polis
 Michael and Shereen Pollak
 William and Deborah Porter

Caren Press
 Morris Price, Jr.
 Dean Prina, M.D.
 Michelle Pujol
 Shannon Pyle
 Walt and Sue Rakowich
 Elisa Ramirez
 Roque and Heidi Ramirez
 Paula Redmond
 Jennifer Reed
 Gary and Sharon Reinsch
 David Rice
 Hugh Rice
 David Rich
 Dan Ritchie
 Pat Robinson
 Rachel Robinson
 Scott Robinson
 Tabitha Rocha
 Rosemary Rodriguez
 David Rolla
 Roy and Bea Romer
 Katherine Rooney
 Melissa Rosas
 Brian Rothkopf
 Frank and Anne Rowe
 Martha and Mike Rubi
 Edward Ruckstuhl
 David and Lauren Runyon
 Robin and Robert Russel
 Sean Ryan
 Timothy and Kathryn Ryan
 Ron and Julie Sachs
 Elissa Salas
 Michael Salem
 Bianca Sanchez
 David Scanavino
 Rick and Cheryl Schaden

Scott and Lisa Scheirman
 David and Jessa Schlichter
 Karl Schlopy
 Gloria Schoch
 Bruce and Lorrie Schroffel
 Emily Schulman
 Lawrence and Judith Schulman
 Dale Schultz
 Heather Scott
 Robert and Diane Scott
 Thomas and Lynn Seaman
 Malcolm and Nicole Seawell
 Mary Seawell
 Sally Seiffer
 Doug and Shannon Selvius
 Tammam Shaar
 Mary Shea
 Way Shen
 Rachel Shields
 Zulema Sierra
 Don and Debra Silversmith
 Ralph and Patricia Silversmith
 George and Mary Sissel
 Gregory and Therese Sissel
 Geoff and Leslie Smart
 Mark and Teri Snell
 Matt Snyder
 Dan Spancers
 Gary and Karen Spaulding
 John Spiegleman
 Scott Springer
 William Stanford
 Mike and Patty Starzer
 Allen Staver and Kim Benson
 Michael N. Stefanoudakis
 Stefan and Andrea Stein
 James and Michele Steinhauser



DPS Superintendent Tom Boasberg enjoys a moment with DSF Scholar Mawukle Yebuah, and patrons Joy Burns and Danel Ritchie at the 13-14 Ed Gala. The annual event was attended by more than 1,000 supporters and raised \$1.3 million to help make college possible for thousands of Denver students.

INDIVIDUAL DONORS

Glenn Takimoto and Janet Stephens
Ken Stiefler
Kristin Stork
Ryan Stranahan
Cori Streetman
Landon and Danielle Sulick
Allan and Alberta Sulzer
Steven and Lorraine Summer
David Suppes
Brandt Swanke
Lonnie and Laurie Tackett
Craig and Amy Tamminga
Wilson Crook and Katrina Tamminga Crook
Charles Tanabe and Arlene Bobrow
Theodore Tanner
Trent and Rana Tarkenton
Elwyn and Lucille Taylor
Emily Temple
Paul and Marilyn Thayer
Alexandra Theriault
Scott Thomas
Chez Thompson
Nancy Tisdall
Leticia Trevino
Brian Truax
John and Marcia Vaughey
Nicole Veltze
Sarah Vidulich
Derek and Laurel Visocky
Mark Waddell and Scott Vickers
J. T. and Judith Walker
Rick and Shana Walker
Matthew Wallach
Charlie and Valerie Walling
Bill and Kristin Waters
Tom Wattles
Jack and Judy Weaver
Dick and Britney Weil
Ken and Tamara Weil
Joshua Weiss
Robert and June Wentworth
David and Amy West
Brent Westrop and Lindsey Smith
Todd Whealon
Bill White
Steve and Barbita White
Timothy White
Jeff and Danna Wiekping
Elizabeth Wilburn
Adam Wilcox
Mark Williams
Kimberly R. Willoughby
Paul Wimer and Lisa Pinto-Wimer
Sam and Leigh Ann Winegrad
Ralph Withrow
Tom and Laura Wolf
Andrew T. Wood
Les and Marianne Woodward
Kathy Workman
Mike Wracher and Jana Thompson
Bill Young
Steve and Kathy Young
Thomas Young
Susan Zoby
Evan and Meghan Zucker
Fred McDowell and Keren Zuniga McDowell

ORGANIZATION DONORS

7News | Azteca
ALPS
Anadarko Petroleum Corp.
Angler's Covey
Anschutz Foundation
Anthony and Delisa Mayer Foundation
ARC Thrift Stores
Arrow Electronics
Ball Foundation
Bank of America Merrill Lynch
Bank of Colorado
Bartlit Beck Herman Palenchar & Scott LLP
BCER
The Benefit Group
Benson Mineral Group
Blackbaud
Blue Sky Fund
Boa Construction
Bohemian Foundation
Bow River Capital Partners
Boyer's Coffee
Boys and Girls Clubs
Breckenridge Grand Vacations
BreitBurn Operating L.P.
The Broadmoor
Brookfield Properties
Brownstein Hyatt Farber Schreck
C.D. Lyon Construction Inc.
Carson Foundation
CH2M Hill Foundation
Chevron USA, Inc.
Cirro
Citi Private Bank
Citibank
CoBiz Financial
Coldwell Banker Commercial Alliance
Colorado Concern
Colorado School of Mines Foundation
Columbine Health Plan
Comcast
Community College of Denver
Community First Foundation
Connie Burwell White and William W. White Foundation
ConocoPhillips
Cross H Foundation
Crown Family Philanthropies
Daniel and Janet Mordecai Foundation
Daniels Fund
Datalink
DaVita
The Denver Foundation
Denver Health Foundation
The Denver Post
The Denver Post Community Foundation
Denver Public Schools
Denver School of Science and Technology High School
DIRECTV
A Divine Thyme Bed and Breakfast
Douglass Family Foundation
EdNews Colorado
Ehrhardt Keefe Steiner & Hottman PC
Elaine W. & Kevin P. Kauffman Family Foundation
EnCana Oil & Gas (USA) Inc.
Enercom, Inc
Enerplus Resources Fund
Ernst and Young
The Estate of Daisy Paich
Express Employment Professionals
Executive Coaching University
Fastlane
First Western Trust Bank

FirstBank
 Four Seasons Hotel
 Gary's Auto Service, LLC
 Geo Drilling Fluids
 Grant Thornton LLP
 The Grogan Family Fund
 Hammersmith Management Inc.
 Harmes C. Fishback Foundation Trust
 Harvey Family Foundation
 Hutton Parker Foundation
 Hyde Park Jewelers
 IMA Financial Group, Inc.
 Ireland Stapleton Pryor & Pascoe, PC
 James and Beatrice Salah Charitable Trust
 James and Mabel Cook Scholarship Trust
 J.D. Rush Company, Inc
 J.F Maddox Foundation
 Janus Capital Group
 Jay and Rose Phillips Family
 Foundation of Colorado
 JobPlex Inc., A DHR International
 Company
 Jones Lang LaSalle
 JPMorgan Chase Foundation
 The Keller Family Fund
 Kelley Knox Family Foundation
 Kenai Drilling Limited
 KeyBank
 King Soopers
 King Soopers - 9th Ave
 King Soopers - Sheridan
 Kjoenke Sports Enterprises
 Kundinger, Corder & Engle, P.C.
 The LARRK Foundation
 Libby Anschutz Foundation
 Liberty Global, Inc.
 Little Pub Fund

Lucas Public Affairs
 Mary Duquaine Fund
 Maffei Foundation
 Majestic Hearth Distributors
 Markus Williams Young &
 Zimmermann LLC
 MarkWest Energy Partners, L.P.
 McGriff, Seibels & Williams, Inc.
 Merrill Corporation
 Merrill Lynch
 Merrion Family Foundation
 Metropolitan State University of Denver
 Microsoft Matching Gifts Program
 Mile High United Way
 The Milestone Group
 MillerCoors



David West speaks at the first annual DSF Golf Classic presented by Arrow Electronics. The event was co-chaired by West and fellow DSF board member, Martin Pocs. The event raised over \$130,000 to help make college possible for thousands of students in Denver.

Monfort Family Foundation
 MorEvents
 Morse Family Foundation
 Mountain Aviation
 Mt. Vernon Country Club
 Nalco Champion An Ecolab Company
 National CineMedia, LLC
 Newalta Environmental Services Inc.
 Newmont Mining Corporation
 NexGen Resources Corporation
 Noble Energy, Inc.
 Northern Electric
 Northern Trust
 Oakwood Homes
 The Old Boys Foundation
 Pacific Coast Energy Company
 Panzano
 Paramount Cafe
 PDC Energy
 Perella Weinberg Partners
 Petrie Partners
 Petruska Family Trust
 Pioneer Natural Resources
 The Piton Foundation
 Platte River Equity
 Push Fitness
 QEP Resources
 Ready Foods
 RB International Markets (USA) LLC
 Red Robin International, Inc.
 Renaissance Charitable Foundation Inc.
 Renal Ventures Management, LLC
 Resolute Energy Corporation
 Rose Medical Center
 Sempra Energy Foundation
 Shelly Thompson
 Sherman & Howard I. J. C.

Silicon Labs
 SM Energy Company
 Solera National Bank
 Stratton-Carpenter & Associates
 Synchrotron
 Texas Guaranteed (TG)
 Thiry-O'Leary Foundation
 TIAA-CREF
 Thelma and Robert W. Scott
 Scholarship Trust
 Titus Foundation
 TransMontaigne
 TW Telecom
 United Launch Alliance
 University of Colorado Denver
 University of Colorado Denver
 Office of Admissions
 University of Denver
 US Department of Education
 Vectra Bank
 Venoco, Inc.
 Verizon Foundation
 Virginia W. Hill Foundation
 Vistar Corporation
 Wagner Equipment Co.
 The Walton Family Foundation
 Waveland Community Development, LLC
 Wells Fargo Foundation
 West Coast Welding & Construction, Inc.
 Western State Colorado University
 Western Union Foundation
 The Women's Foundation of Colorado
 Rose Community Foundation
 Brent and Julie Morse

FINANCIALS 2013-14

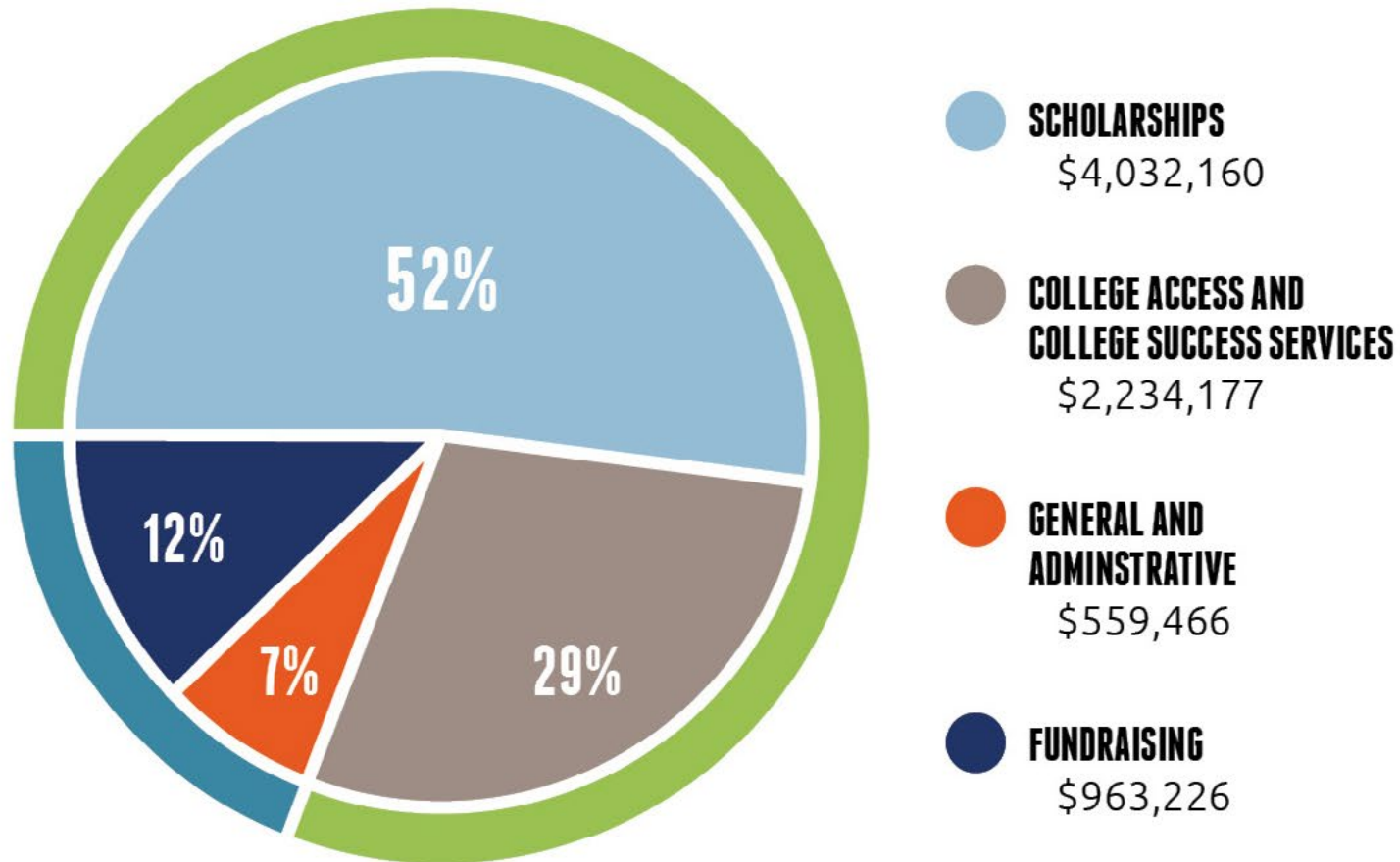
Statement of Activities For the year ended June 30, 2014

SUPPORT & REVENUE:	
Contributions	2,433,584
Special Events Revenue (net)	1,048,006
Net Investment Income	4,370,757
Total Support & Revenue	7,852,347
EXPENSES:	
Scholarships	4,032,160
College Access and College Success Services	2,234,177
Total Program Expenses	6,266,337
General and Administrative	559,166
Fundraising	963,226
Total Expenses	7,789,029
Change in Assets	63,318
Net Assets – Beginning of Year	34,354,296
Net Assets – End of year	34,417,614

Statement of Financial Position As of June 30, 2014

ASSETS:	
Cash and Cash Equivalents	3,149,721
Pledge Receivables	442,667
Investment	31,581,202
Fixed Assets, Net	51,869
Other Assets	181,732
Total	35,407,191
LIABILITIES & NET ASSETS:	
LIABILITIES:	
Accounts Payable and Accrued Liabilities	989,577
NET ASSETS:	
Unrestricted	690,771
Temporarily Restricted	695,597
Permanently Restricted	33,031,246
Total Net Assets	34,417,614
Total Liabilities and Net Assets	35,407,191

PROGRAM INVESTMENTS AND ADMINISTRATIVE EXPENSES





303 E. 17th Avenue, Suite 200
Denver, Colorado 80203
303.951.4140

denverscholarship.org